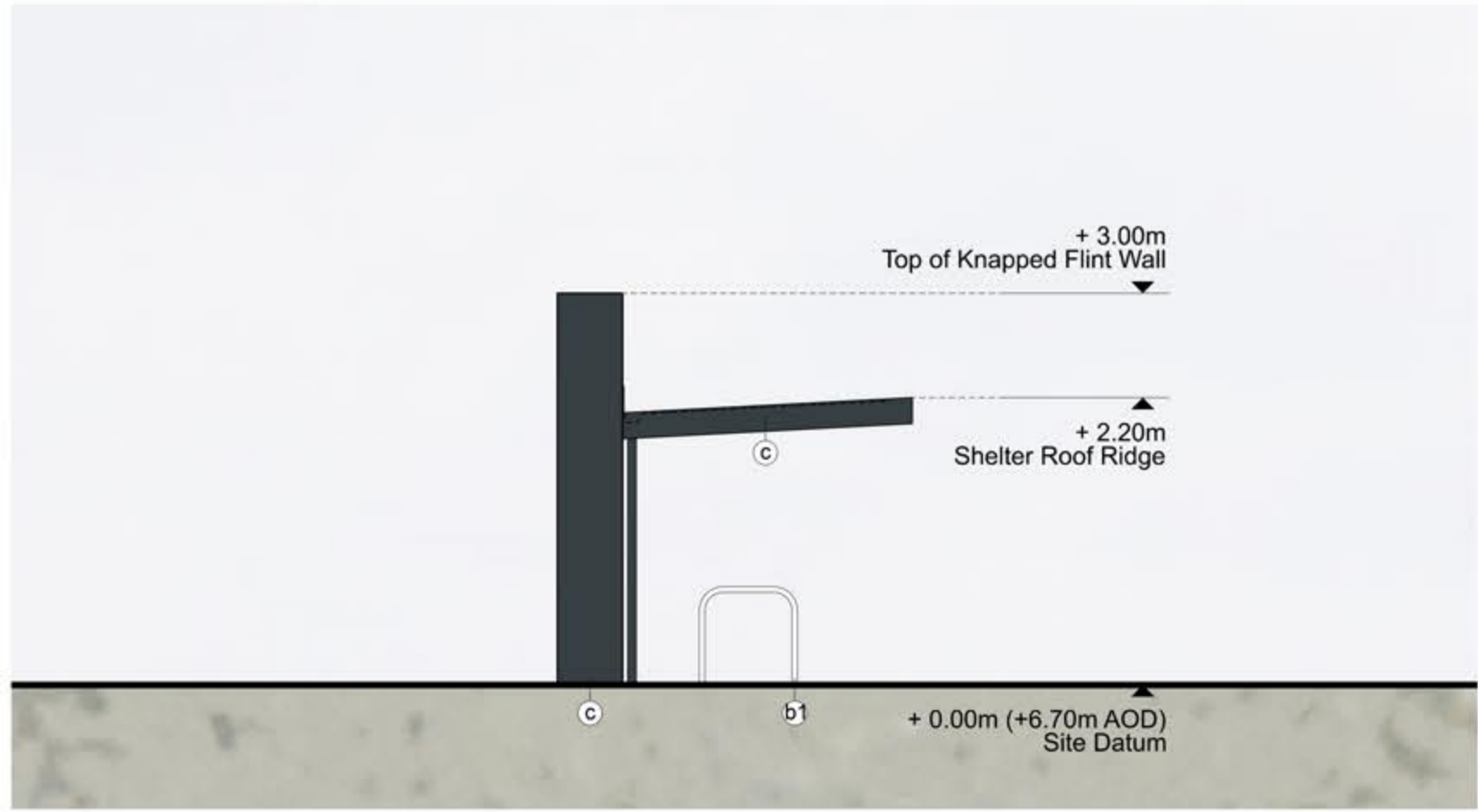
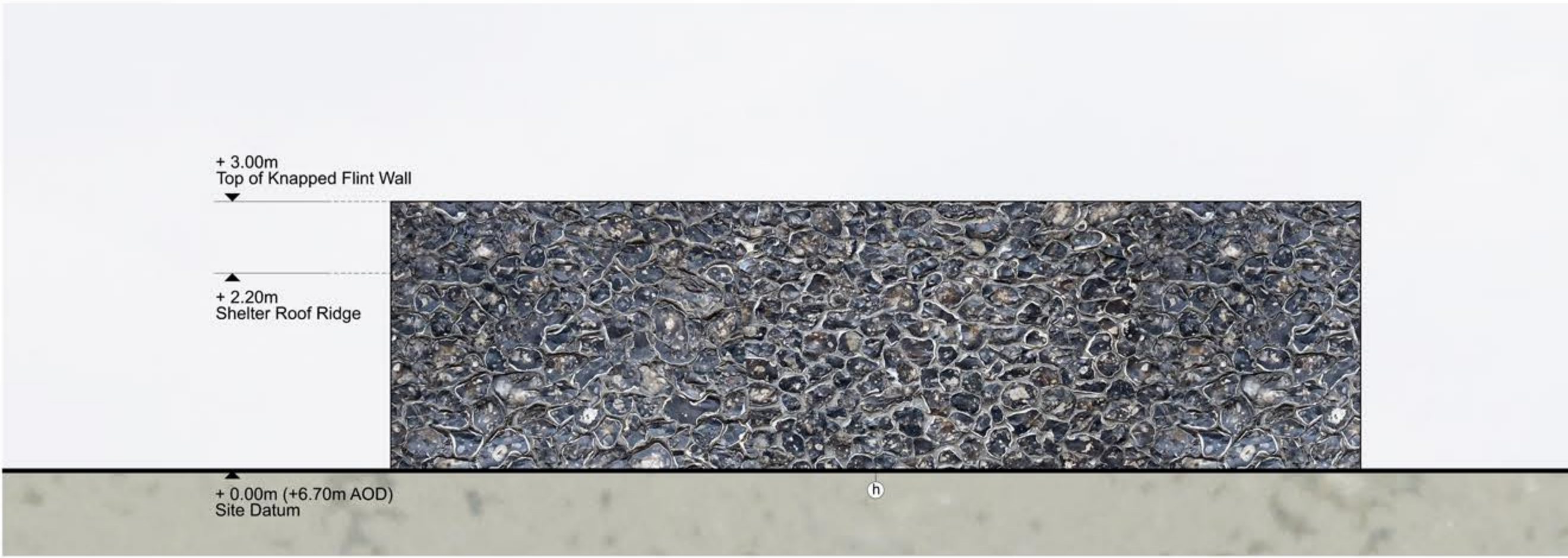


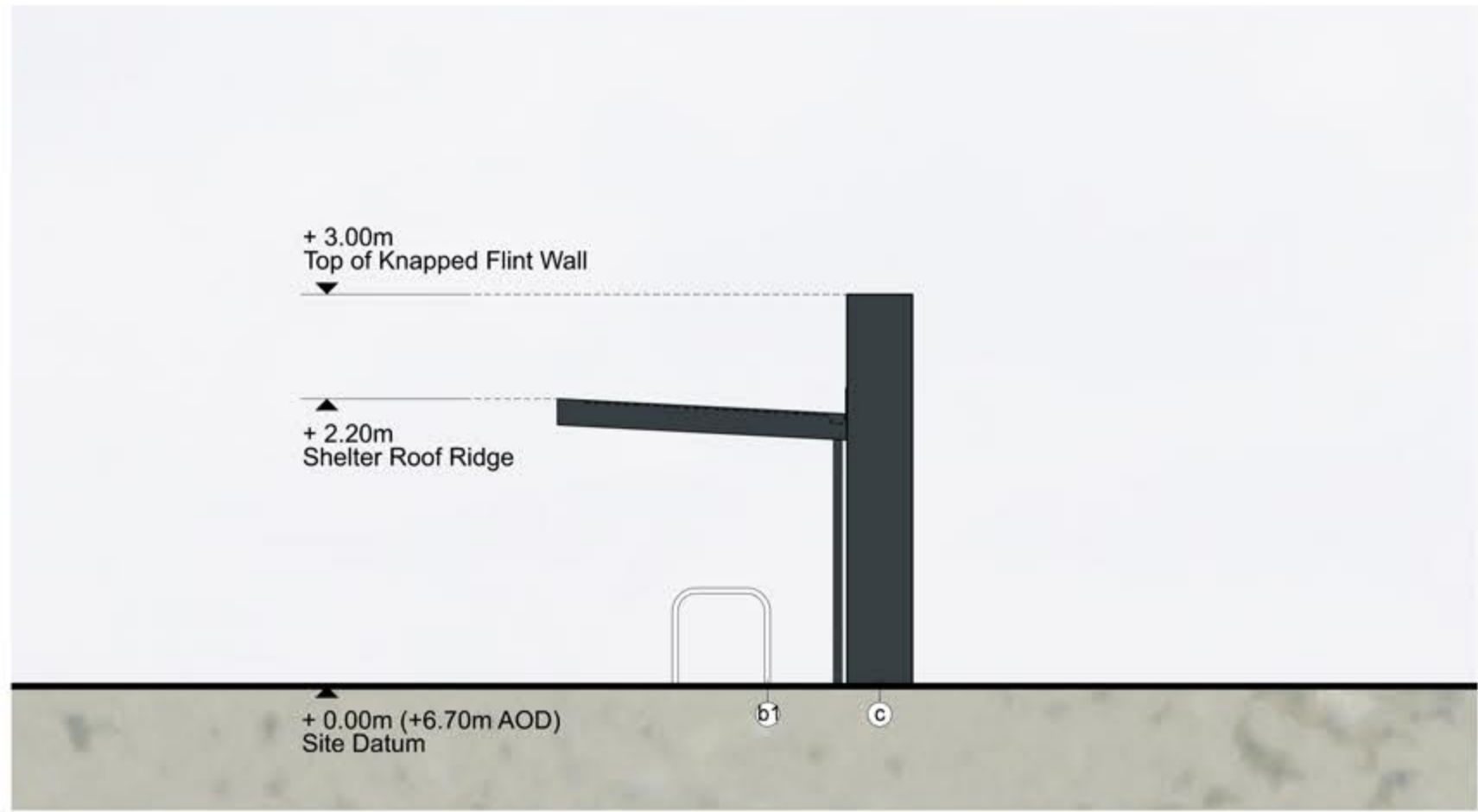
Roof Plan



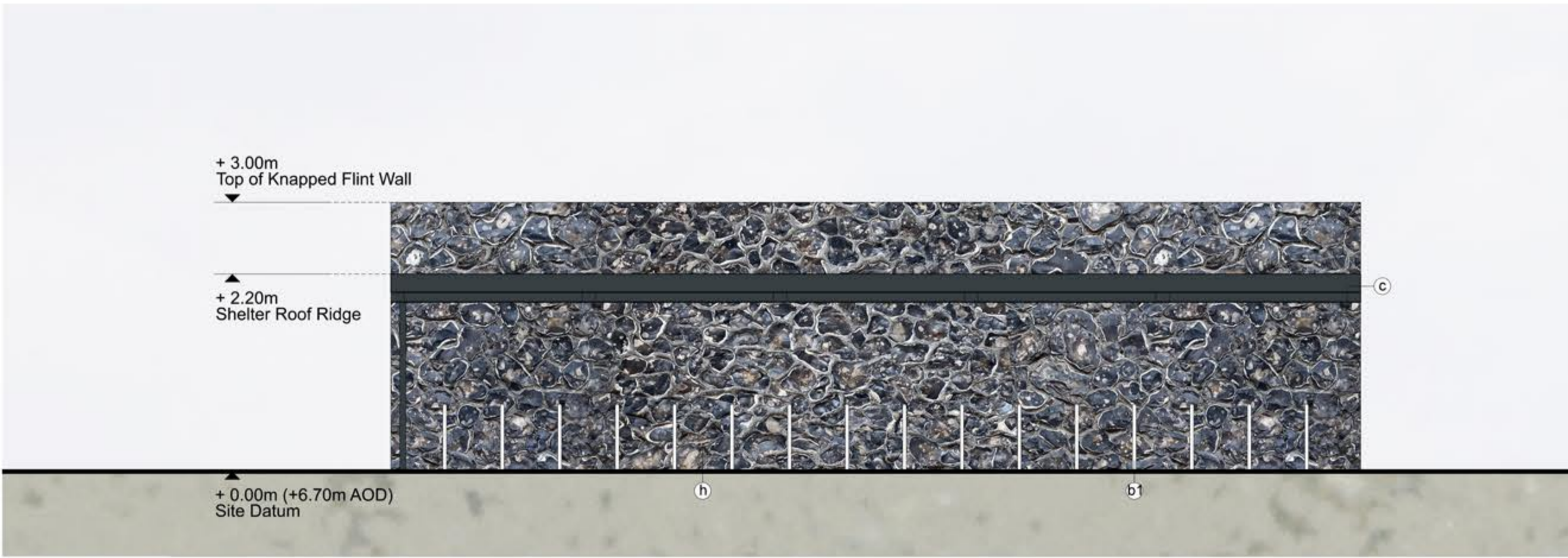
North Elevation



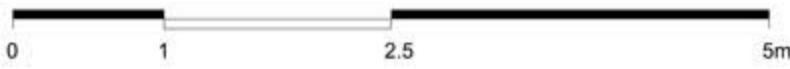
East Elevation



South Elevation



West Elevation



NOTE

- THIS DRAWING IS COPYRIGHT GSDA LTD.
- THE CONTRACTOR MUST NOT SCALE FROM THE DRAWING ALL DIMENSIONS TO BE TAKEN FROM DIMENSION STRINGS.
- WHERE ANY DISCREPANCIES ARE FOUND BETWEEN DIMENSIONS THESE MUST BE BROUGHT TO THE ATTENTION OF THE ARCHITECTS FOR RESOLUTION.
- WHERE DISCREPANCIES EXIST BETWEEN REFERENCE OR ASSEMBLY DRAWINGS & DETAIL DRAWINGS, THE LATTER TAKE PREFERENCE.

LEGEND	
a) Euroclad Vico Cladding System / flashing Colour: Seren Copper	f) Knapped Flint Wall
b) Euroclad Vico Cladding System / flashing Colour: Seren Silver	g) Metal roller shutter doors Colour: Anthracite (RAL 7016)
c) Composite metal wall cladding / flashing Colour: Anthracite (RAL 7016)	h) Metal roller shutter doors Colour: Albatross (RAL 240 80 05)
d) Composite metal wall cladding / flashing Colour: Albatross (RAL 240 80 05)	i) In situ / pre fab concrete plinths, bunds etc
e) PPC aluminium louvres, Colour: Seren Silver	j) PPC metal stack casing, metal ducting, tanks and silos Colour: Oyster (RAL 7035)
f) PPC aluminium louvres, Colour: Albatross (RAL 240 80 05)	k) PPC metal stack casing, metal ducting, tanks and silos Colour: Anthracite (RAL 7016)
g) PPC aluminium louvres, Colour: Anthracite (RAL 7016)	l) PPC aluminium framed curtain walling, glazing and personnel doors Colour: Anthracite (RAL 7016)
h) Knapped Flint Wall	m) PPC aluminium personnel doors Colour: Albatross (RAL 240 80 05)
i) Metal roller shutter doors Colour: Anthracite (RAL 7016)	n) Curtain walling glass spandrel panels Colour: Alaska Grey (RAL 7000) (r1) Colour: Merin Grey (RAL 190 40 05) (r2)
j) Metal roller shutter doors Colour: Albatross (RAL 240 80 05)	o) Engineering brick plinth Colour: Staffordshire Slate Blue Smooth (from Ibstock)
k) Metal roller shutter doors Colour: Albatross (RAL 240 80 05)	p) Flat paint / PPC finish Colour: Albatross (RAL 240 80 05)
l) In situ / pre fab concrete plinths, bunds etc	q) Metal trapezoidal profile roof cladding Colour: Anthracite (RAL 7016)
m) PPC metal stack casing, metal ducting, tanks and silos Colour: Oyster (RAL 7035)	r) Metal trapezoidal profile roof cladding Colour: Anthracite (RAL 7016)
n) PPC metal stack casing, metal ducting, tanks and silos Colour: Anthracite (RAL 7016)	s) Metal trapezoidal profile roof cladding Colour: Goosewing Grey (RAL 7038)
o) PPC aluminium framed curtain walling, glazing and personnel doors Colour: Anthracite (RAL 7016)	t) Flat roofing - Single ply membrane system Colour: Lead Grey
p) PPC aluminium personnel doors Colour: Albatross (RAL 240 80 05)	u) Flat roofing - Single ply membrane system Colour: Light Grey
q) Curtain walling glass spandrel panels Colour: Alaska Grey (RAL 7000) (r1) Colour: Merin Grey (RAL 190 40 05) (r2)	v) Proflit glass cladding system
r) Engineering brick plinth Colour: Staffordshire Slate Blue Smooth (from Ibstock)	w) Rooflights
s) Flat paint / PPC finish Colour: Albatross (RAL 240 80 05)	x) Polycarbonate wall and roof panels Colour: Clear
t) Metal trapezoidal profile roof cladding Colour: Anthracite (RAL 7016)	y) Galvanised steel
u) Metal trapezoidal profile roof cladding Colour: Goosewing Grey (RAL 7038)	
v) Flat roofing - Single ply membrane system Colour: Lead Grey	
w) Flat roofing - Single ply membrane system Colour: Light Grey	
x) Proflit glass cladding system	
y) Rooflights	
z) Polycarbonate wall and roof panels Colour: Clear	
aa) Galvanised steel	

Note: All materials, finishes and colours will be as stated or similar approved.

PROJECT		FORD CIRCULAR TECHNOLOGY PARK	
DRAWING		WSTF Cycle Shelter Plans and Elevations	
FOR PLANNING		-	20/06/10
1:50@A1, 1:100@A3	20/06/10	Issued for planning	
SCALE	DATE		
1404 PL360	-		
DWG. NO.	REVISION		

GSDA
GARRY STEWART DESIGN ASSOCIATES
Highlands House, Office 300A, 165 The Broadway, Wimbledon, London, SW19 1NE
T. 020 8544 8085