

NOTE: Planting represented at 10 years of growth

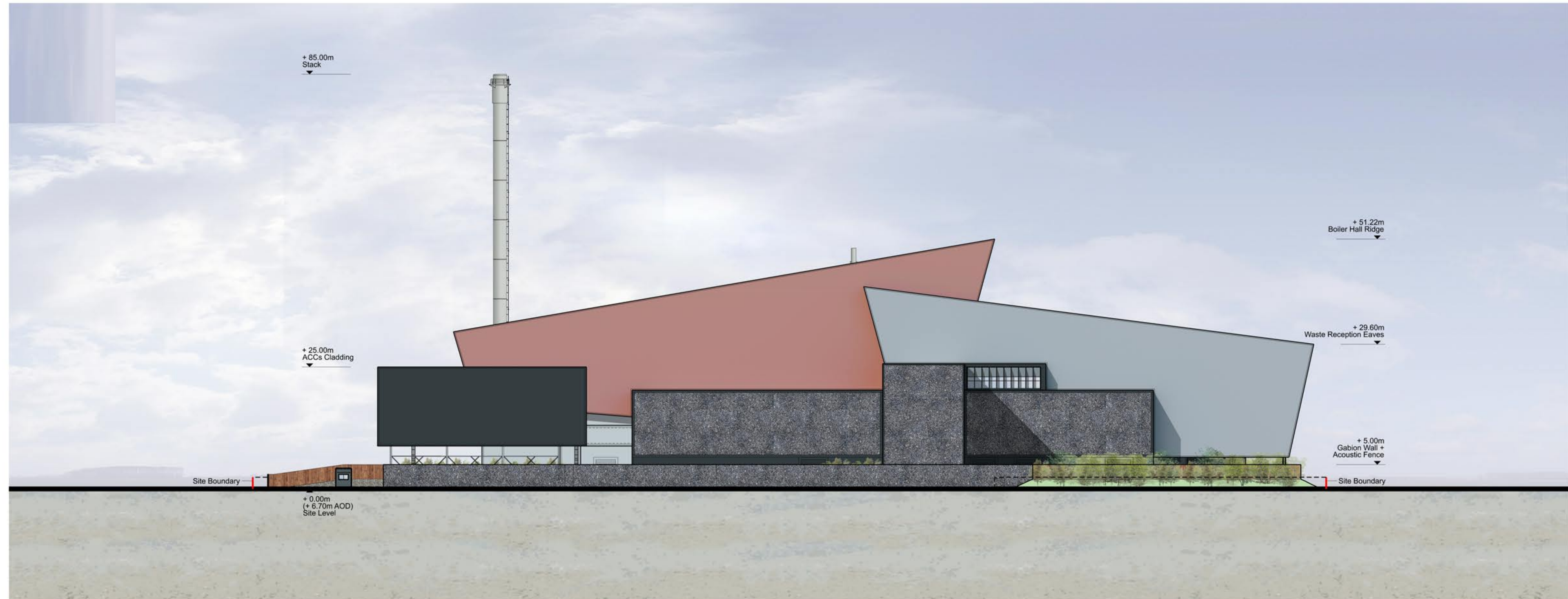


NOTE

1. THIS DRAWING IS COPYRIGHT GSDA LTD.
2. THE CONTRACTOR MUST NOT SCALE FROM THE DRAWING ALL DIMENSIONS TO BE TAKEN FROM DIMENSION STRINGS.
3. WHERE ANY DISCREPANCIES ARE FOUND BETWEEN DIMENSIONS THESE MUST BE BROUGHT TO THE ATTENTION OF THE ARCHITECTS FOR RESOLUTION.
4. WHERE DISCREPANCIES EXIST BETWEEN REFERENCE OR ASSEMBLY DRAWINGS & DETAIL DRAWINGS, THE LATTER TAKE PREFERENCE.

PROJECT		FORD CIRCULAR TECHNOLOGY PARK			
DRAWING		North Site Elevation			
FOR PLANNING		-	20/06/10	Issued for planning	
1:500@A1	20/06/10				
SCALE	DATE				
1404 PL310	-				
DWG. NO.	REVISION				

**GSDA**  
 GARRY STEWART DESIGN ASSOCIATES  
 Highlands House, Office 300A, 165 The Broadway, Wimbledon, London, SW19 1NE  
 T. 020 8544 8085



NOTE: Planting represented at 10 years of growth



NOTE

1. THIS DRAWING IS COPYRIGHT GSDA LTD.
2. THE CONTRACTOR MUST NOT SCALE FROM THE DRAWING ALL DIMENSIONS TO BE TAKEN FROM DIMENSION STRINGS.
3. WHERE ANY DISCREPANCIES ARE FOUND BETWEEN DIMENSIONS THESE MUST BE BROUGHT TO THE ATTENTION OF THE ARCHITECTS FOR RESOLUTION.
4. WHERE DISCREPANCIES EXIST BETWEEN REFERENCE OR ASSEMBLY DRAWINGS & DETAIL DRAWINGS, THE LATTER TAKE PREFERENCE.

PROJECT		FORD CIRCULAR TECHNOLOGY PARK					
DRAWING		East Site Elevation					
FOR PLANNING		-	20/06/10	Issued for planning			
1:500@A1	20/06/10						
SCALE	DATE						
1404 PL311	-						
DWG. NO.	REVISION						

**GSDA**  
 GARRY STEWART DESIGN ASSOCIATES  
 Highlands House, Office 300A, 165 The Broadway, Wimbledon, London, SW19 1NE  
 T. 020 8544 8085



NOTE: Planting represented at 10 years of growth



NOTE

1. THIS DRAWING IS COPYRIGHT GSDA LTD.
2. THE CONTRACTOR MUST NOT SCALE FROM THE DRAWING ALL DIMENSIONS TO BE TAKEN FROM DIMENSION STRINGS.
3. WHERE ANY DISCREPANCIES ARE FOUND BETWEEN DIMENSIONS THESE MUST BE BROUGHT TO THE ATTENTION OF THE ARCHITECTS FOR RESOLUTION.
4. WHERE DISCREPANCIES EXIST BETWEEN REFERENCE OR ASSEMBLY DRAWINGS & DETAIL DRAWINGS, THE LATTER TAKE PREFERENCE.

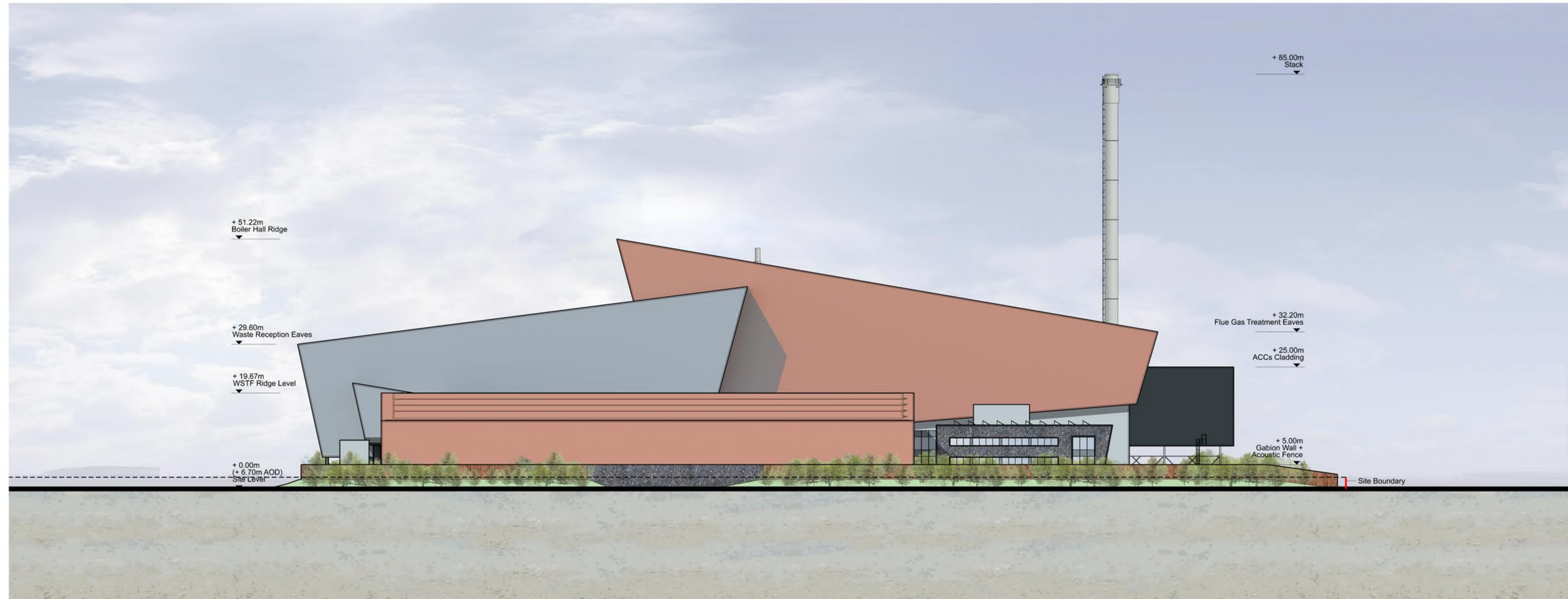
PROJECT FORD CIRCULAR TECHNOLOGY PARK

DRAWING South Site Elevation

FOR PLANNING		-	20/06/10	Issued for planning						
1:500@A1	20/06/10									
SCALE	DATE									
1404 PL312	-									
DWG. NO.	REVISION									

**GSDA**  
GARRY STEWART DESIGN ASSOCIATES

Highlands House, Office 300A, 165 The Broadway, Wimbledon, London, SW19 1NE  
T. 020 8544 8085



NOTE: Planting represented at 10 years of growth



NOTE

1. THIS DRAWING IS COPYRIGHT GSDA LTD.
2. THE CONTRACTOR MUST NOT SCALE FROM THE DRAWING ALL DIMENSIONS TO BE TAKEN FROM DIMENSION STRINGS.
3. WHERE ANY DISCREPANCIES ARE FOUND BETWEEN DIMENSIONS THESE MUST BE BROUGHT TO THE ATTENTION OF THE ARCHITECTS FOR RESOLUTION.
4. WHERE DISCREPANCIES EXIST BETWEEN REFERENCE OR ASSEMBLY DRAWINGS & DETAIL DRAWINGS, THE LATTER TAKE PREFERENCE.

PROJECT

FORD CIRCULAR TECHNOLOGY PARK

DRAWING

West Site Elevation

FOR PLANNING

- 20/06/10 Issued for planning

1:500@A1  
SCALE

20/06/10  
DATE

1404 PL313  
DWG. NO.

-  
REVISION

**GSDA**  
GARRY STEWART DESIGN ASSOCIATES

Highlands House, Office 300A, 165 The Broadway, Wimbledon, London, SW19 1NE  
T. 020 8544 8085