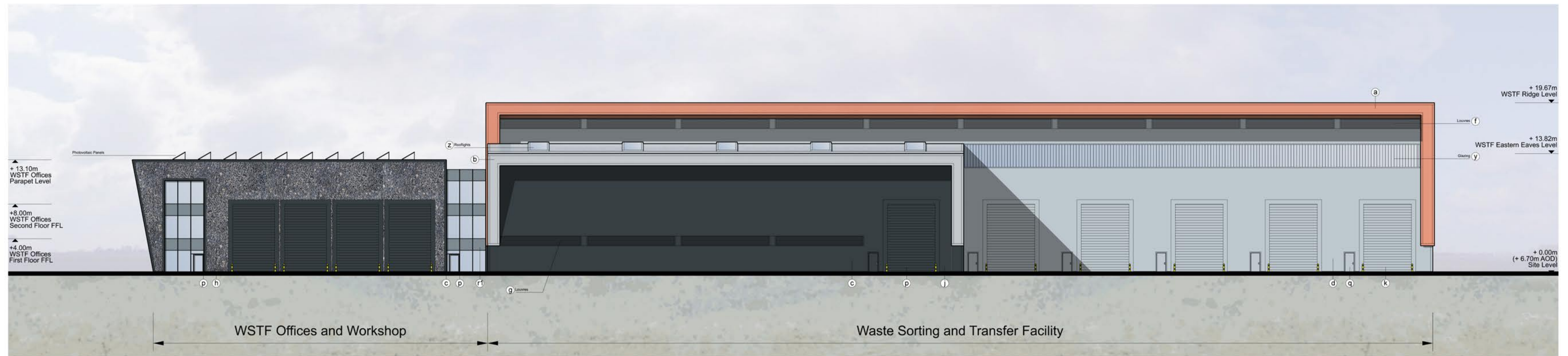
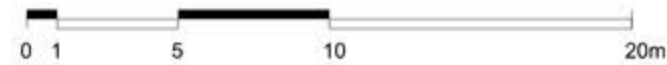




North Elevation



East Elevation



NOTE

- THIS DRAWING IS COPYRIGHT GSDA LTD.
- THE CONTRACTOR MUST NOT SCALE FROM THE DRAWING ALL DIMENSIONS TO BE TAKEN FROM DIMENSION STRINGS.
- WHERE ANY DISCREPANCIES ARE FOUND BETWEEN DIMENSIONS THESE MUST BE BROUGHT TO THE ATTENTION OF THE ARCHITECTS FOR RESOLUTION.
- WHERE DISCREPANCIES EXIST BETWEEN REFERENCE OR ASSEMBLY DRAWINGS & DETAIL DRAWINGS, THE LATTER TAKE PREFERENCE.

LEGEND	
a) Euroclad Vio Cladding System / flashing Colour: Seren Copper	f) Knapped Flint Wall
b) Euroclad Vio Cladding System / flashing Colour: Seren Silver	g) Metal roller shutter doors Colour: Anthracite (RAL 7016)
c) Composite metal wall cladding / flashing Colour: Anthracite (RAL 7016)	h) Metal roller shutter doors Colour: Albatross (RAL 240 80 05)
d) Composite metal wall cladding / flashing Colour: Albatross (RAL 240 80 05)	i) In situ / pre fab concrete plinths, bunds etc
e) PPC aluminium louvres, Colour: Seren Silver	j) PPC metal stack casing, metal ducting, tanks and silos Colour: Oyster (RAL 7035)
f) PPC aluminium louvres, Colour: Albatross (RAL 240 80 05)	k) PPC metal stack casing, metal ducting, tanks and silos Colour: Anthracite (RAL 7016)
g) PPC aluminium louvres, Colour: Anthracite (RAL 7016)	l) Knapped Flint Wall
h) PPC aluminium framed curtain walling, glazing and personnel doors Colour: Anthracite (RAL 7016)	m) Metal roller shutter doors Colour: Anthracite (RAL 7016)
i) PPC aluminium personnel doors Colour: Albatross (RAL 240 80 05)	n) Metal roller shutter doors Colour: Albatross (RAL 240 80 05)
j) Curtain walling glass spandrel panels Colour: Alaska Grey (RAL 7000) (r1) Colour: Merin Grey (RAL 190 40 05) (r2)	o) In situ / pre fab concrete plinths, bunds etc
k) Engineering brick plinth Colour: Staffordshire Slate Blue Smooth (from Istock)	p) PPC metal stack casing, metal ducting, tanks and silos Colour: Oyster (RAL 7035)
l) Flat paint / PPC finish Colour: Albatross (RAL 240 80 05)	q) PPC metal stack casing, metal ducting, tanks and silos Colour: Anthracite (RAL 7016)
m) Metal trapezoidal profile roof cladding Colour: Anthracite (RAL 7016)	r) Metal trapezoidal profile roof cladding Colour: Anthracite (RAL 7016)
n) Metal trapezoidal profile roof cladding Colour: Goosewing Grey (RAL 7038)	s) Metal trapezoidal profile roof cladding Colour: Goosewing Grey (RAL 7038)
o) Flat roofing - Single ply membrane system Colour: Lead Grey	t) Flat roofing - Single ply membrane system Colour: Light Grey
p) Flat roofing - Single ply membrane system Colour: Light Grey	u) Profilfit glass cladding system
q) Profilfit glass cladding system	v) Rooflights
r) Rooflights	w) Polycarbonate wall and roof panels Colour: Clear
s) Polycarbonate wall and roof panels Colour: Clear	x) Galvanised steel
t) Galvanised steel	y) Note: All materials, finishes and colours will be as stated or similar approved.

PROJECT		FORD CIRCULAR TECHNOLOGY PARK	
DRAWING		WSTF North and East Elevations	
FOR PLANNING		-	20/06/10 Issued for planning
1:250@A1 SCALE	20/06/10 DATE		
1404 PL305 DWG. NO.	- REVISION		

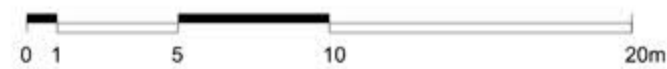
GSDA
GARRY STEWART DESIGN ASSOCIATES
Highlands House, Office 300A, 165 The
Broadway, Wimbledon, London, SW19 1NE
T. 020 8544 8085



South Elevation



West Elevation



- NOTE**
- THIS DRAWING IS COPYRIGHT GSDA LTD.
 - THE CONTRACTOR MUST NOT SCALE FROM THE DRAWING ALL DIMENSIONS TO BE TAKEN FROM DIMENSION STRINGS.
 - WHERE ANY DISCREPANCIES ARE FOUND BETWEEN DIMENSIONS THESE MUST BE BROUGHT TO THE ATTENTION OF THE ARCHITECTS FOR RESOLUTION.
 - WHERE DISCREPANCIES EXIST BETWEEN REFERENCE OR ASSEMBLY DRAWINGS & DETAIL DRAWINGS, THE LATTER TAKE PREFERENCE.

LEGEND

- | | | | |
|----------------------------------------------------------------------------------|-----------------------------------------------------------------------------------------------|----------------------------------------------------------------------------------------------------------------------------|---------------------------------------------------------------------------------|
| a) Euroclad Vieo Cladding System / flashing
Colour: Seren Copper | f) Knapped Flint Wall | p) PPC aluminium framed curtain walling,
glazing and personnel doors
Colour: Anthracite (RAL 7016) | v) Metal trapezoidal profile roof cladding
Colour: Goosewing Grey (RAL 7038) |
| b) Euroclad Vieo Cladding System / flashing
Colour: Seren Silver | g) Metal roller shutter doors
Colour: Anthracite (RAL 7016) | q) PPC aluminium personnel doors
Colour: Albatross (RAL 240 80 05) | w) Flat roofing - Single ply membrane
system Colour: Lead Grey |
| c) Composite metal wall cladding / flashing
Colour: Anthracite (RAL 7016) | h) Metal roller shutter doors
Colour: Albatross (RAL 240 80 05) | r) Curtain walling glass spandrel panels
Colour: Alaska Grey (RAL 7000) (r1)
Colour: Merin Grey (RAL 190 40 05) (r2) | x) Flat roofing - Single ply membrane
system Colour: Light Grey |
| d) Composite metal wall cladding / flashing
Colour: Albatross (RAL 240 80 05) | i) In situ / pre fab concrete plinths,
bunds etc | s) Engineering brick plinth
Colour: Staffordshire Slate Blue Smooth
(from lbstock) | y) Profilit glass cladding system |
| e) PPC aluminium louvres,
Colour: Seren Silver | m) PPC metal stack casing, metal
ducting, tanks and silos
Colour: Oyster (RAL 7035) | t) Flat paint / PPC finish
Colour: Albatross (RAL 240 80 05) | z) Rooflights |
| f) PPC aluminium louvres,
Colour: Albatross (RAL 240 80 05) | n) PPC metal stack casing, metal
ducting, tanks and silos
Colour: Anthracite (RAL 7016) | u) Metal trapezoidal profile roof cladding
Colour: Anthracite (RAL 7016) | aa) Polycarbonate wall and roof panels
Colour: Clear |
| g) PPC aluminium louvres,
Colour: Anthracite (RAL 7016) | | | bb) Galvanised steel |
- Note: All materials, finishes and colours will be as stated or similar approved.

PROJECT **FORD CIRCULAR TECHNOLOGY PARK**

DRAWING **WSTF South and West Elevations**

FOR PLANNING		-	20/06/10	Issued for planning					
1:250@A1 SCALE	20/06/10 DATE								
1404 PL306 DWG. NO.	- REVISION								

GSDA
GARRY STEWART DESIGN ASSOCIATES
Highlands House, Office 300A, 165 The
Broadway, Wimbledon, London, SW19 1NE
T. 020 8544 8085