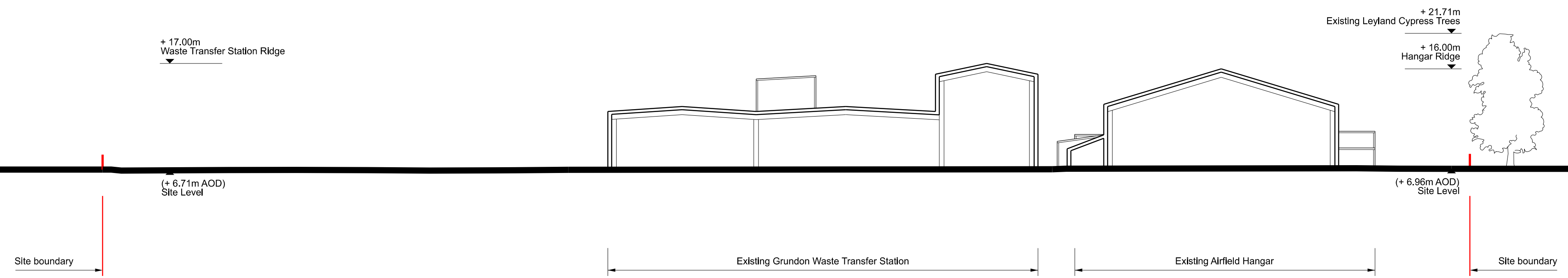
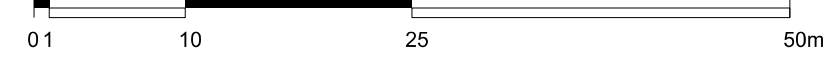


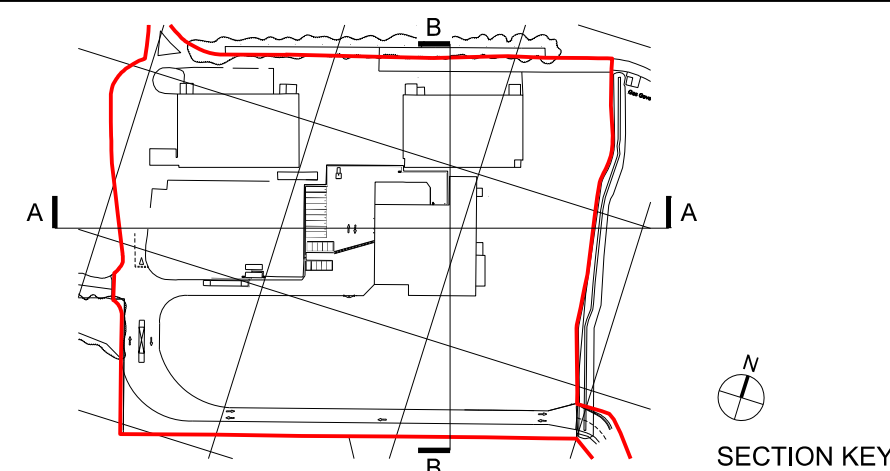
Section A-A, Through Site Looking North



Section B-B, Through Site Looking West

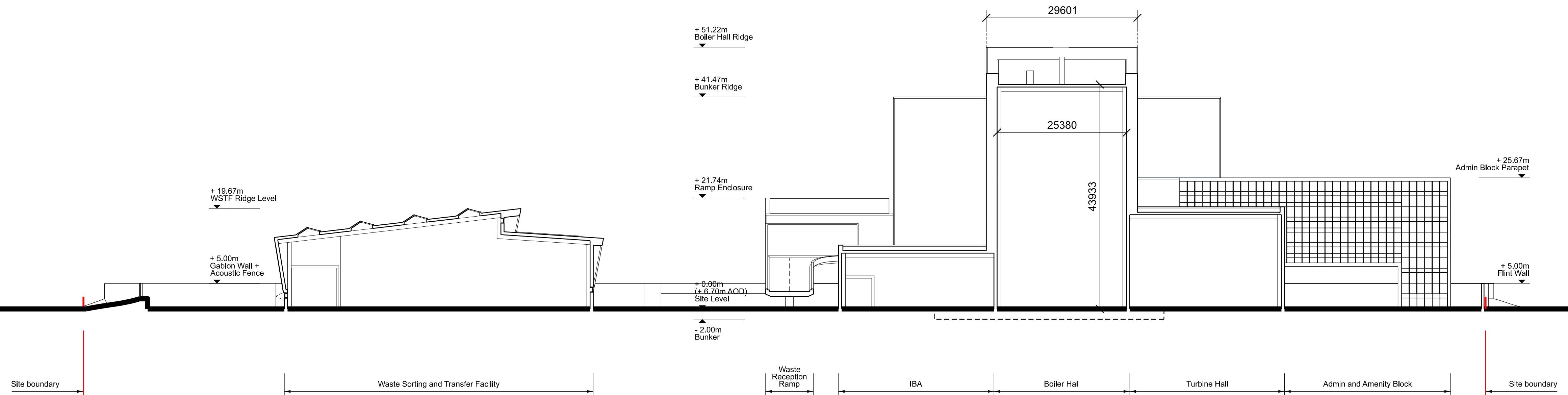


- NOTE
1. THIS DRAWING IS COPYRIGHT GSDA LTD.
 2. THE CONTRACTOR MUST NOT SCALE FROM THE DRAWING ALL DIMENSIONS TO BE TAKEN FROM DIMENSION STRINGS.
 3. WHERE ANY DISCREPANCIES ARE FOUND BETWEEN DIMENSIONS THESE MUST BE BROUGHT TO THE ATTENTION OF THE ARCHITECTS FOR RESOLUTION.
 4. WHERE DISCREPANCIES EXIST BETWEEN REFERENCE OR ASSEMBLY DRAWINGS & DETAIL DRAWINGS, THE LATTER TAKE PREFERENCE.

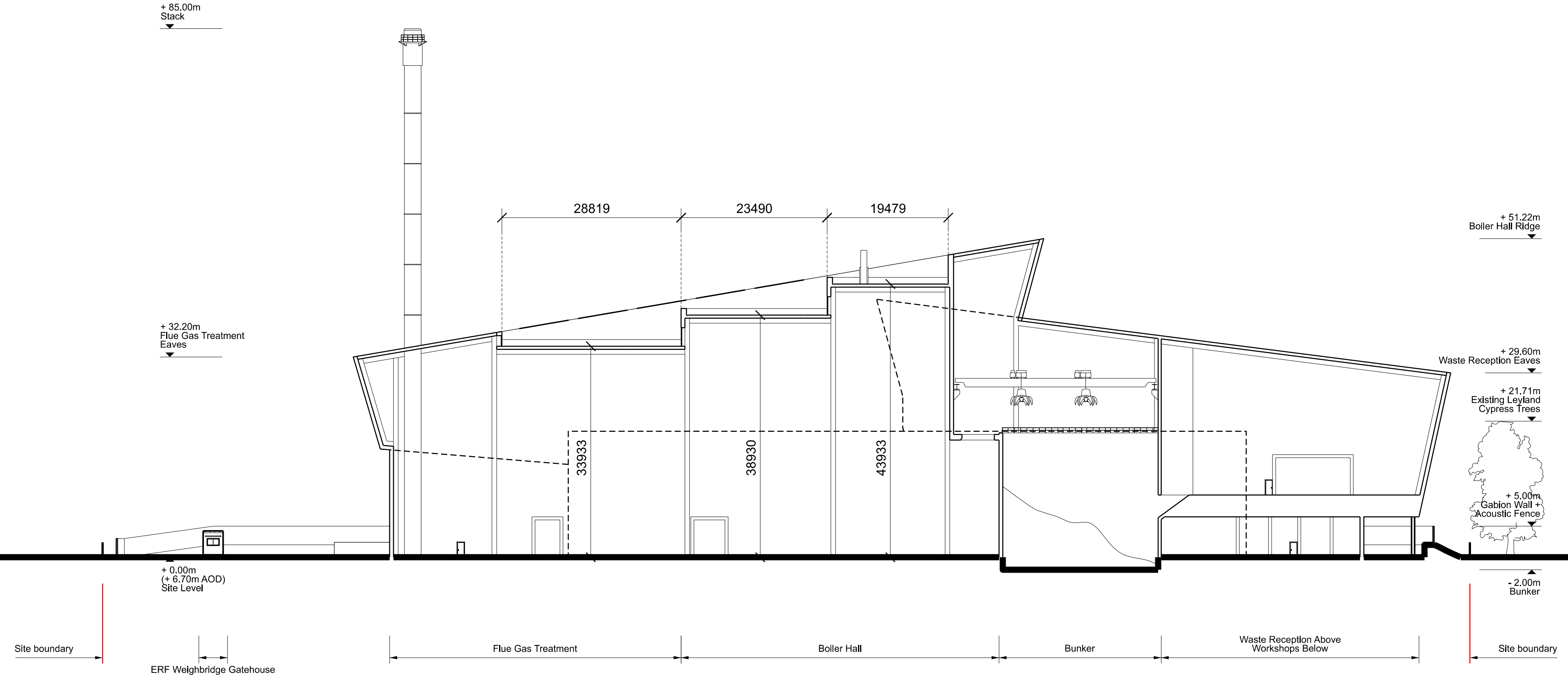


PROJECT		FORD CIRCULAR TECHNOLOGY PARK					
DRAWING		Existing Site Sections					
FOR PLANNING		-	20/06/10	Issued for planning			
1:500@A1	20/06/10						
SCALE	DATE						
1404 PL200	-						
DWG. NO.	REVISION						

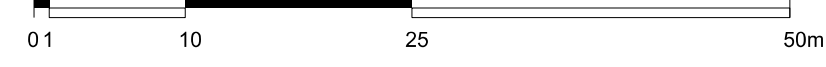
GSDA
 GARRY STEWART DESIGN ASSOCIATES
 Highlands House, Office 300A, 165 The Broadway, Wimbledon, London, SW19 1NE
 T. 020 8544 8085



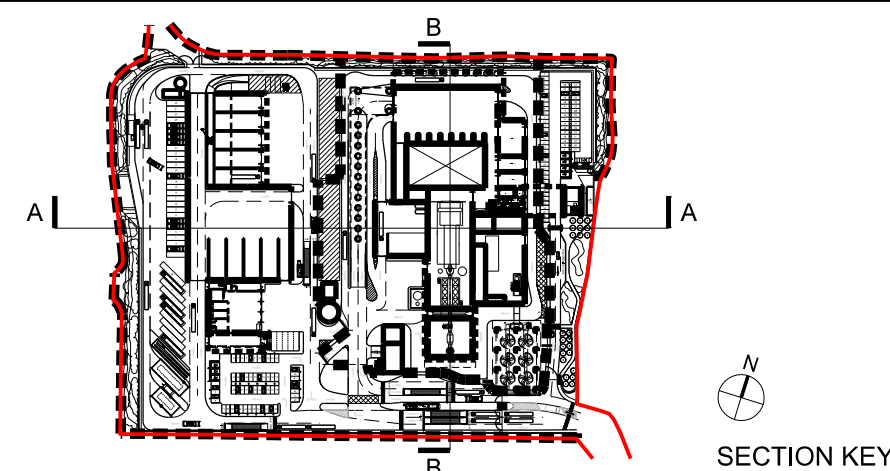
Section A-A, Through Site Looking North



Section B-B, Through Site Looking West



- NOTE
1. THIS DRAWING IS COPYRIGHT GSDA LTD.
 2. THE CONTRACTOR MUST NOT SCALE FROM THE DRAWING ALL DIMENSIONS TO BE TAKEN FROM DIMENSION STRINGS.
 3. WHERE ANY DISCREPANCIES ARE FOUND BETWEEN DIMENSIONS THESE MUST BE BROUGHT TO THE ATTENTION OF THE ARCHITECTS FOR RESOLUTION.
 4. WHERE DISCREPANCIES EXIST BETWEEN REFERENCE OR ASSEMBLY DRAWINGS & DETAIL DRAWINGS, THE LATTER TAKE PREFERENCE.



PROJECT		FORD CIRCULAR TECHNOLOGY PARK			
DRAWING		Proposed Site Sections			
FOR PLANNING		-	20/06/10	Issued for planning	
1:500@A1	20/06/10				
SCALE	DATE				
1404 PL201	-				
DWG. NO.	REVISION				

GSDA
 GARRY STEWART DESIGN ASSOCIATES
 Highlands House, Office 300A, 165 The Broadway, Wimbledon, London, SW19 1NE
 T. 020 8544 8085