

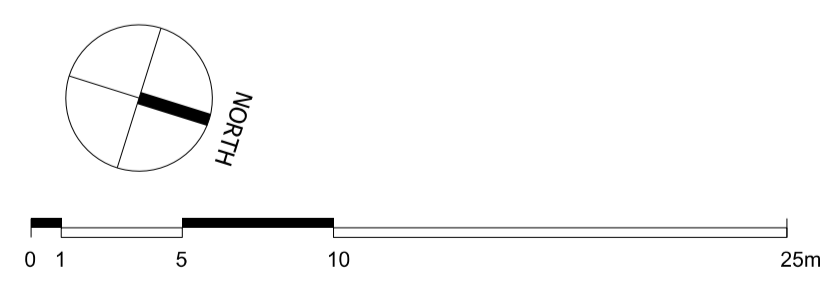
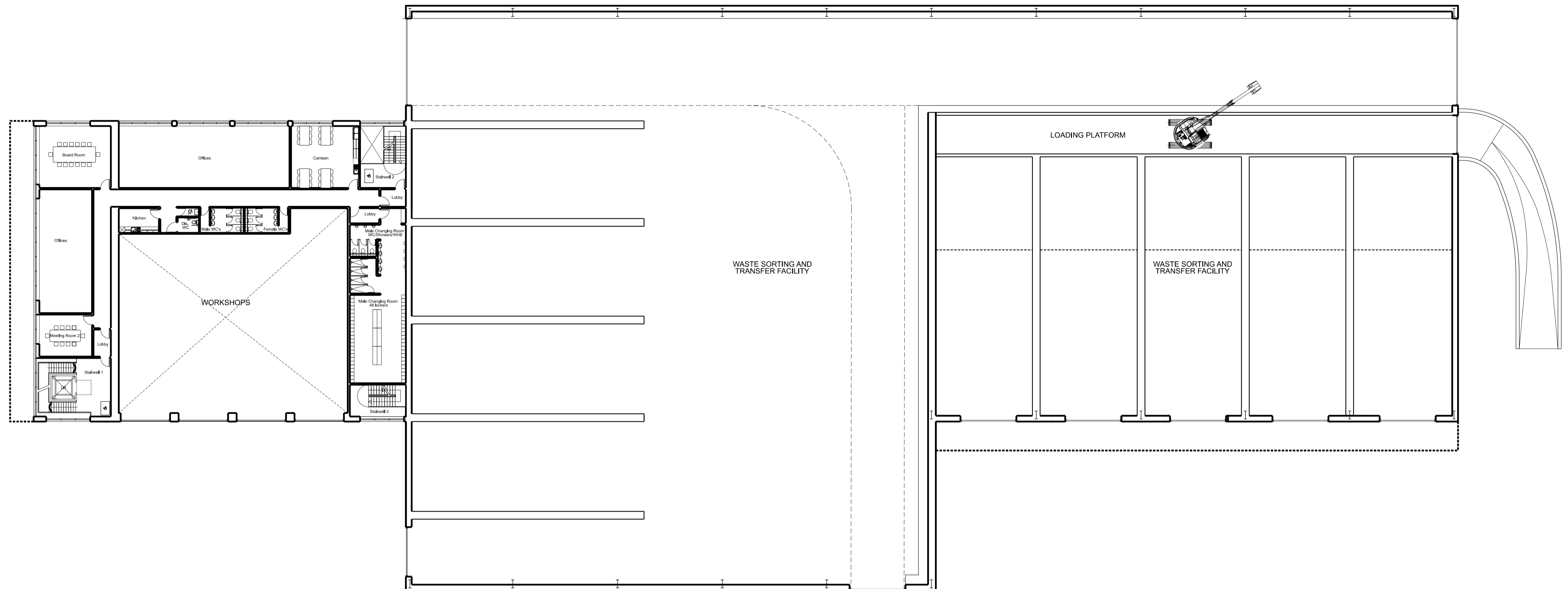
NOTE

1. THIS DRAWING IS COPYRIGHT GSDA LTD.
2. THE CONTRACTOR MUST NOT SCALE FROM THE DRAWING ALL DIMENSIONS TO BE TAKEN FROM DIMENSION STRINGS.
3. WHERE ANY DISCREPANCIES ARE FOUND BETWEEN DIMENSIONS THESE MUST BE BROUGHT TO THE ATTENTION OF THE ARCHITECTS FOR RESOLUTION.
4. WHERE DISCREPANCIES EXIST BETWEEN REFERENCE OR ASSEMBLY DRAWINGS & DETAIL DRAWINGS, THE LATTER TAKE PREFERENCE.

PROJECT		FORD CIRCULAR TECHNOLOGY PARK			
DRAWING		WSTF Ground Floor Plan +0.00m			
FOR PLANNING		-	20/06/10	Issued for planning	
1:250@A1	20/06/10				
SCALE	DATE				
1404 SK120	-				
DWG. NO.	REVISION				

GSDA
 GARRY STEWART DESIGN ASSOCIATES

Highlands House, Office 300A, 165 The Broadway, Wimbledon, London, SW19 1NE
 T. 020 8544 8085

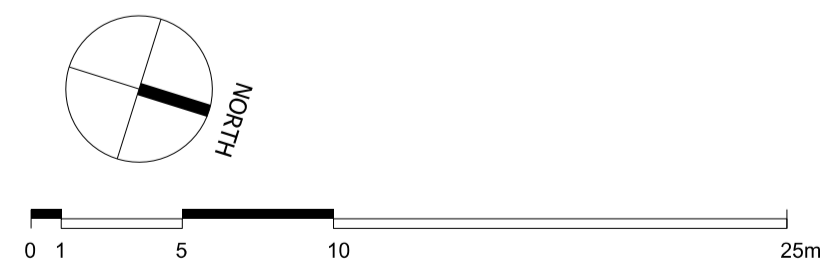
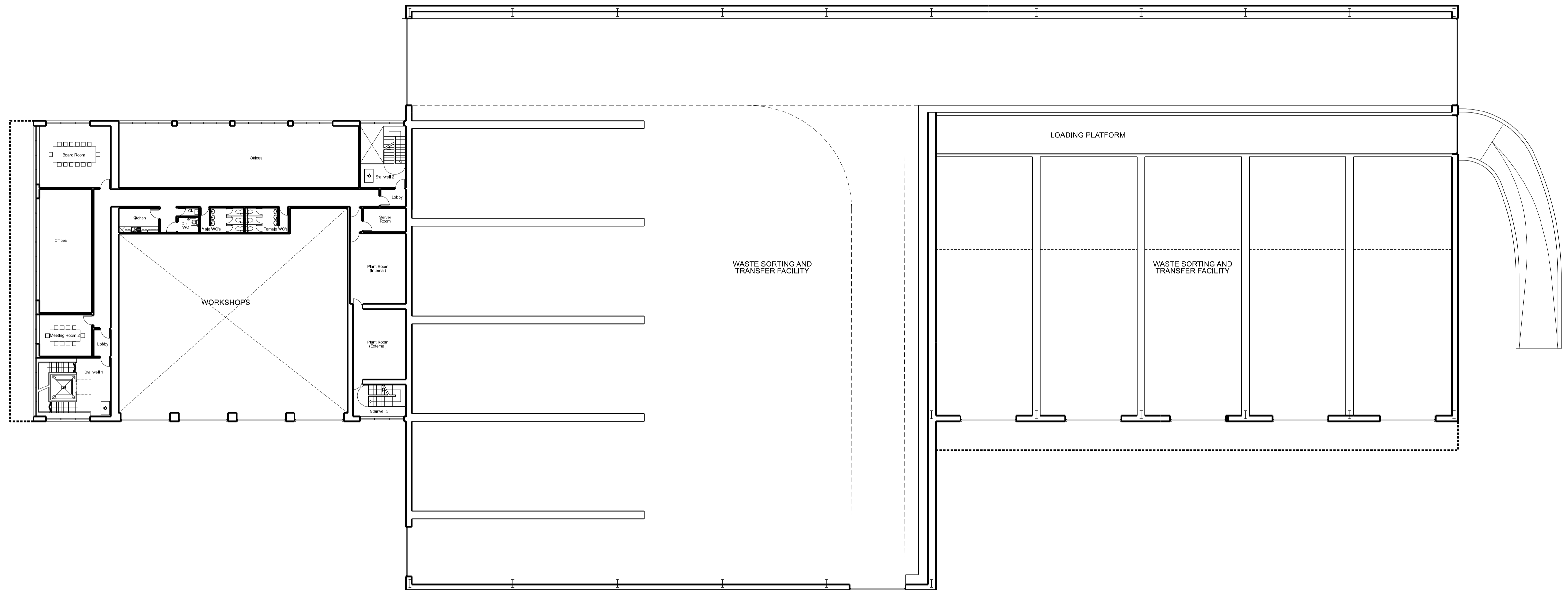


NOTE

1. THIS DRAWING IS COPYRIGHT GSDA LTD.
2. THE CONTRACTOR MUST NOT SCALE FROM THE DRAWING ALL DIMENSIONS TO BE TAKEN FROM DIMENSION STRINGS.
3. WHERE ANY DISCREPANCIES ARE FOUND BETWEEN DIMENSIONS THESE MUST BE BROUGHT TO THE ATTENTION OF THE ARCHITECTS FOR RESOLUTION.
4. WHERE DISCREPANCIES EXIST BETWEEN REFERENCE OR ASSEMBLY DRAWINGS & DETAIL DRAWINGS, THE LATTER TAKE PREFERENCE.

PROJECT		FORD CIRCULAR TECHNOLOGY PARK					
DRAWING		WSTF First Floor Plan +4.00m					
FOR PLANNING		-	20/06/10	Issued for planning			
1:250@A1	20/06/10						
SCALE	DATE						
1404 PL121	-						
DWG. NO.	REVISION						

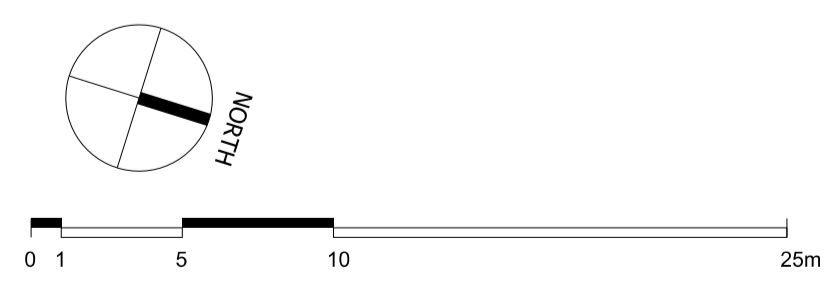
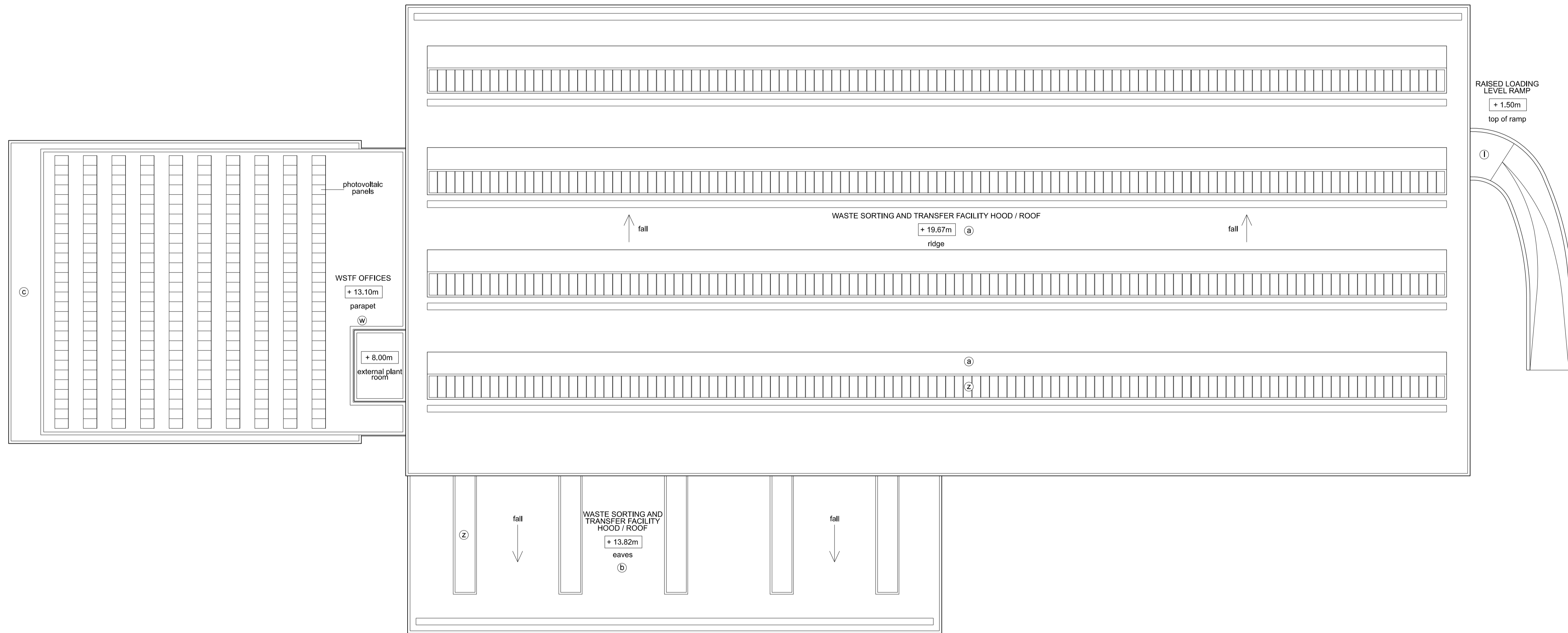
GSDA
 GARRY STEWART DESIGN ASSOCIATES
 Highlands House, Office 300A, 165 The Broadway, Wimbledon, London, SW19 1NE
 T. 020 8544 8085



- NOTE
1. THIS DRAWING IS COPYRIGHT GSDA LTD.
 2. THE CONTRACTOR MUST NOT SCALE FROM THE DRAWING ALL DIMENSIONS TO BE TAKEN FROM DIMENSION STRINGS.
 3. WHERE ANY DISCREPANCIES ARE FOUND BETWEEN DIMENSIONS THESE MUST BE BROUGHT TO THE ATTENTION OF THE ARCHITECTS FOR RESOLUTION.
 4. WHERE DISCREPANCIES EXIST BETWEEN REFERENCE OR ASSEMBLY DRAWINGS & DETAIL DRAWINGS, THE LATTER TAKE PREFERENCE.

PROJECT		FORD CIRCULAR TECHNOLOGY PARK					
DRAWING		WSTF Second Floor Plan +8.00m					
FOR PLANNING		-	20/06/10	Issued for planning			
1:250@A1	20/06/10						
SCALE	DATE						
1404 PL122	-						
DWG. NO.	REVISION						

GSDA
 GARRY STEWART DESIGN ASSOCIATES
 Highlands House, Office 300A, 165 The Broadway, Wimbledon, London, SW19 1NE
 T. 020 8544 8085



NOTE

- THIS DRAWING IS COPYRIGHT GSDA LTD.
- THE CONTRACTOR MUST NOT SCALE FROM THE DRAWING ALL DIMENSIONS TO BE TAKEN FROM DIMENSION STRINGS.
- WHERE ANY DISCREPANCIES ARE FOUND BETWEEN DIMENSIONS THESE MUST BE BROUGHT TO THE ATTENTION OF THE ARCHITECTS FOR RESOLUTION.
- WHERE DISCREPANCIES EXIST BETWEEN REFERENCE OR ASSEMBLY DRAWINGS & DETAIL DRAWINGS, THE LATTER TAKE PREFERENCE.

LEGEND	
(a) Eurodad Vieo Cladding System / flashing Colour: Seren Copper	(t) Knapped Flint Wall
(b) Eurodad Vieo Cladding System / flashing Colour: Seren Silver	(j) Metal roller shutter doors Colour: Anthracite (RAL 7016)
(c) Composite metal wall cladding / flashing Colour: Anthracite (RAL 7016)	(k) Metal roller shutter doors Colour: Albatross (RAL 240 80 05)
(d) Composite metal wall cladding / flashing Colour: Albatross (RAL 240 80 05)	(l) In situ / pre fab concrete plinths, bunds etc
(e) PPC aluminium louvres, Colour: Seren Silver	(m) PPC metal stack casing, metal ducting, tanks and silos Colour: Oyster (RAL 7035)
(f) PPC aluminium louvres, Colour: Albatross (RAL 240 80 05)	(n) PPC metal stack casing, metal ducting, tanks and silos Colour: Anthracite (RAL 7016)
(g) PPC aluminium louvres, Colour: Anthracite (RAL 7016)	(o) PPC aluminium framed curtain walling, glazing and personnel doors Colour: Anthracite (RAL 7016)
(h) PPC aluminium personnel doors Colour: Albatross (RAL 240 80 05)	(p) Flat roofing - Single ply membrane system, Colour: Lead Grey
(i) Curtain walling glass spandrel panels Colour: Alaska Grey (RAL 7000) (r1) Colour: Merlin Grey (RAL 180 40 05) (r2)	(q) Flat roofing - Single ply membrane system, Colour: Light Grey
(s) Engineering brick plinth Colour: Staffordshire Slate Blue Smooth (from lbstock)	(r) Profilitt glass cladding system
(t) Flat paint / PPC finish Colour: Albatross (RAL 240 80 05)	(s) Rooflights
(u) Metal trapezoidal profile roof cladding Colour: Anthracite (RAL 7016)	(t) Polycarbonate wall and roof panels Colour: Clear
	(v) Galvanised steel
	Note: All materials, finishes and colours will be as stated or similar approved.

PROJECT		FORD CIRCULAR TECHNOLOGY PARK	
DRAWING		WSTF Roof Plan	
FOR PLANNING		-	20/06/10 Issued for planning
1:250@A1 SCALE	20/06/10 DATE		
1404 PL123 DWG. NO.	- REVISION		

GSDA
GARRY STEWART DESIGN ASSOCIATES

Highlands House, Office 300A, 165 The Broadway, Wimbledon, London, SW19 1NE
T. 020 8544 8085